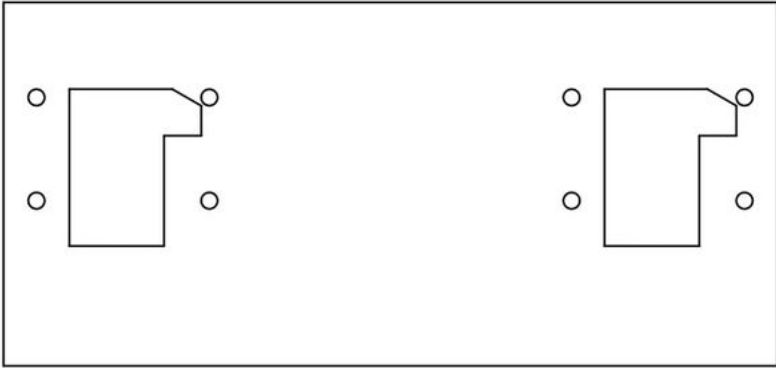
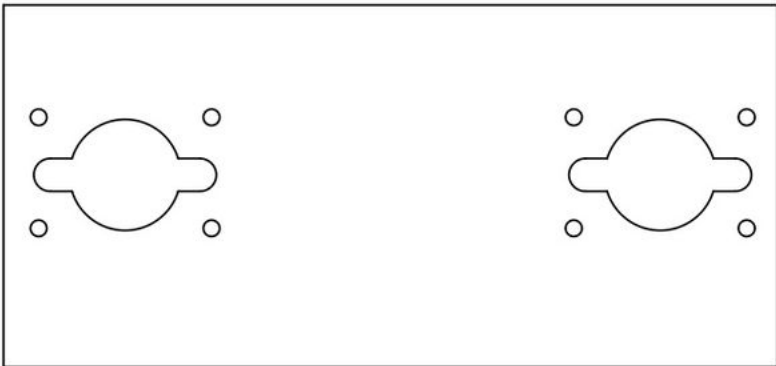


StereoPi Mechanics

Camera support plates

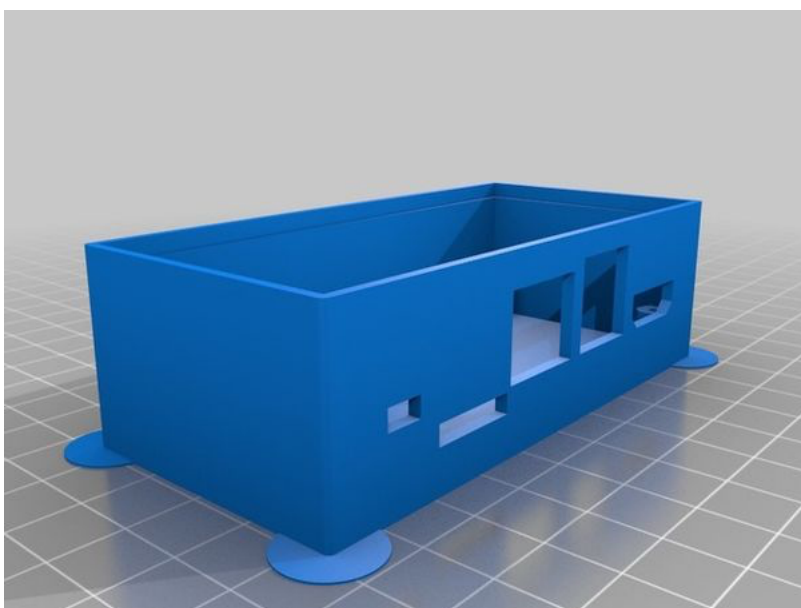


- [Support plate for v1 and v2 cameras \(http://wiki.stereopi.com/files/stereopi-cams-v1-v2.dxf.zip\)](http://wiki.stereopi.com/files/stereopi-cams-v1-v2.dxf.zip)
- [Alternative link for download \(http://stereopi.com/sites/default/files/stereopi-cams-v1-v2.dxf.zip\)](http://stereopi.com/sites/default/files/stereopi-cams-v1-v2.dxf.zip)

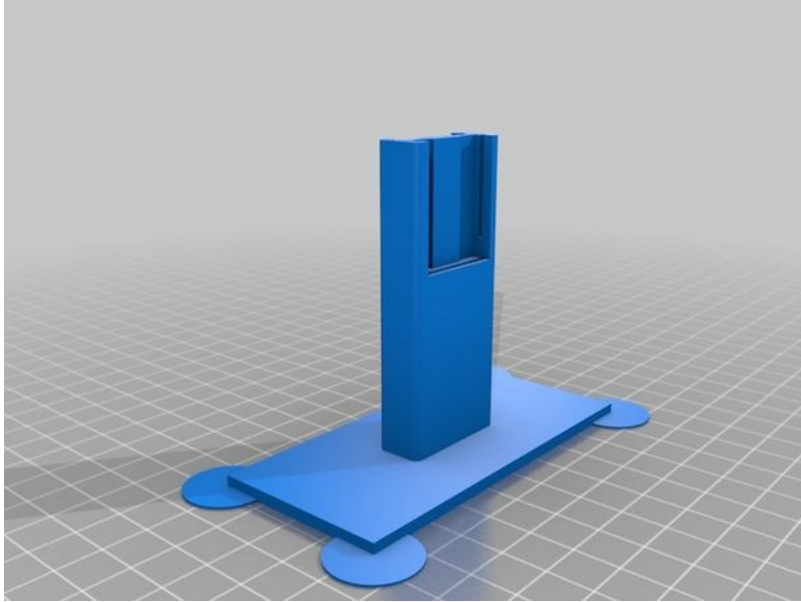


- [Support plate for Waveshare wide angle cameras \(http://wiki.stereopi.com/files/stereopi-cams-wide-waveshare.dxf.zip\)](http://wiki.stereopi.com/files/stereopi-cams-wide-waveshare.dxf.zip)
- [Alternative link for download \(http://stereopi.com/sites/default/files/stereopi-cams-wide-waveshare.dxf.zip\)](http://stereopi.com/sites/default/files/stereopi-cams-wide-waveshare.dxf.zip)

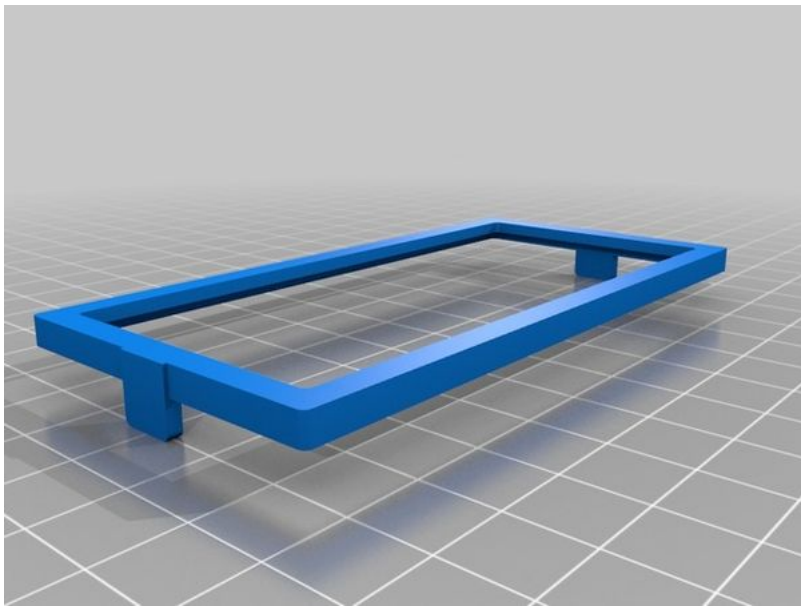
Cases for 3D print



- [Basic case \(http://wiki.stereopi.com/files/stereopi-basic-case.stl\)](http://wiki.stereopi.com/files/stereopi-basic-case.stl)
- [Alternative download link \(http://stereopi.com/sites/default/files/stereopi-basic-case.stl.zip\)](http://stereopi.com/sites/default/files/stereopi-basic-case.stl.zip)



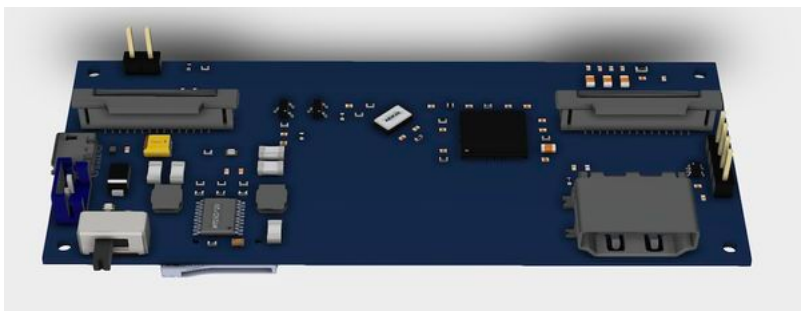
- [Panorama 360 case cover \(http://wiki.stereopi.com/files/stereopi-panorama-360.stl\)](http://wiki.stereopi.com/files/stereopi-panorama-360.stl)
- [Alternative download link \(http://stereopi.com/sites/default/files/stereopi-panorama-360.stl.zip\)](http://stereopi.com/sites/default/files/stereopi-panorama-360.stl.zip)



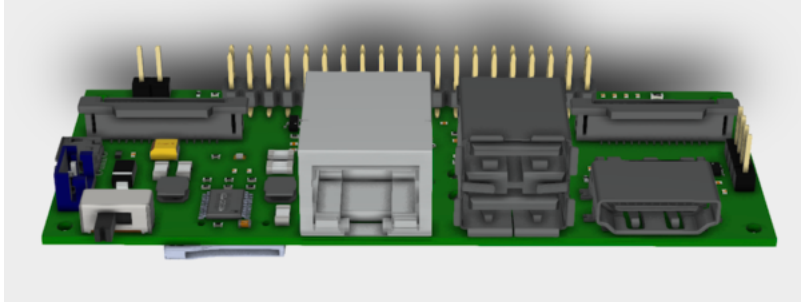
- [Camera plate fixator \(optional\) \(http://wiki.stereopi.com/files/stereopi-plate-fixator.stl\)](http://wiki.stereopi.com/files/stereopi-plate-fixator.stl)
- [Alternative download link \(http://stereopi.com/sites/default/files/stereopi-plate-fixator.stl.zip\)](http://stereopi.com/sites/default/files/stereopi-plate-fixator.stl.zip)

Step file (3D model of the board)

You can use free Autodesk viewer to view these STEP files here: <https://viewer.autodesk.com>



- [StereoPi slim 3D model \(ZIP, ~11 Mb\) \(http://wiki.stereopi.com/files/stereopi-slim.step.zip\)](http://wiki.stereopi.com/files/stereopi-slim.step.zip)
- [Alternative download link \(http://stereopi.com/sites/default/files/stereopi-slim.step.zip\)](http://stereopi.com/sites/default/files/stereopi-slim.step.zip)



- [StereoPi regular 3D model \(ZIP, ~12 Mb\)](http://wiki.stereopi.com/files/stereopi-regular.step.zip) (<http://wiki.stereopi.com/files/stereopi-regular.step.zip>)
- [Alternative download link](http://stereopi.com/sites/default/files/stereopi-regular.step.zip) (<http://stereopi.com/sites/default/files/stereopi-regular.step.zip>)

Pi Camera V1 features and drawings Pi Camera V2 features and drawings Waveshare wide angle camera features and drawings

Retrieved from "http://wiki.stereopi.com/index.php?title=StereoPi_Mechanics&oldid=186"

This page was last edited on 13 February 2019, at 20:29.